

12

ForView 28

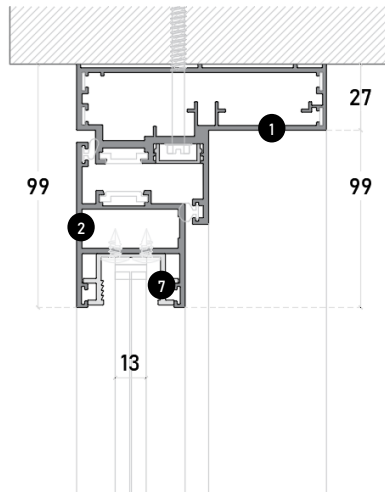
Ventana
Baciente

Ventana Batiente

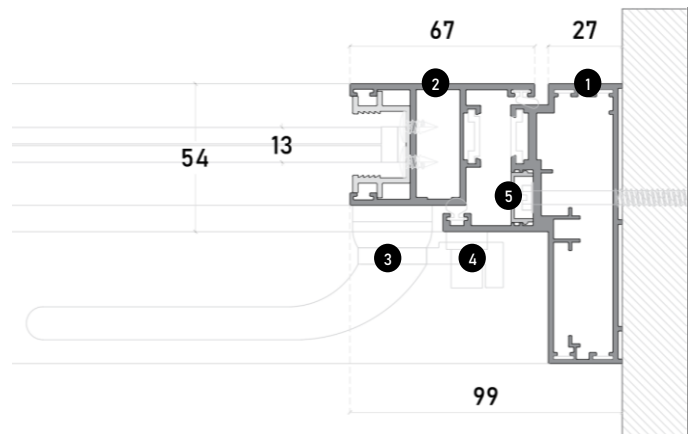
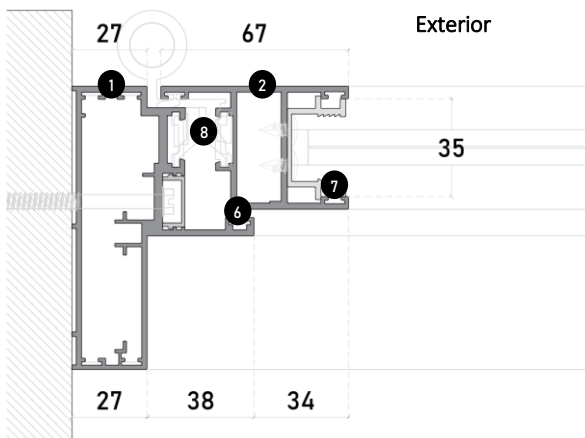
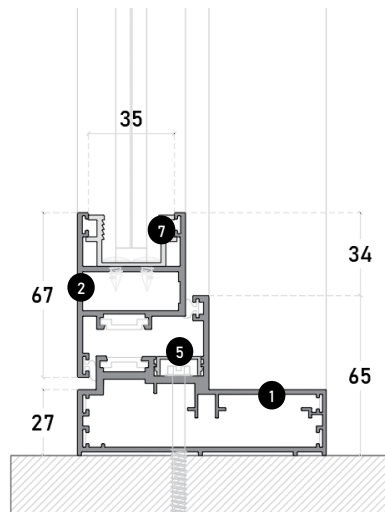


Elementos del Sistema

- ① Marco principal
- ② Marco ventana
- ③ Maneta
- ④ Sistema cerradura
- ⑤ Cubre pijas
- ⑥ Sello
- ⑦ Reductor
- ⑧ Bisagra



Exterior

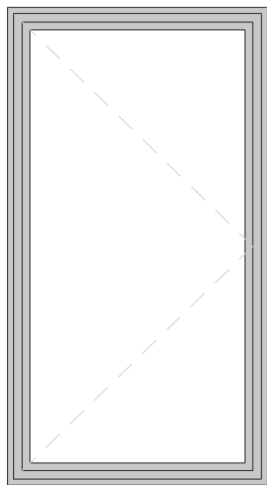


Prestaciones del Sistema

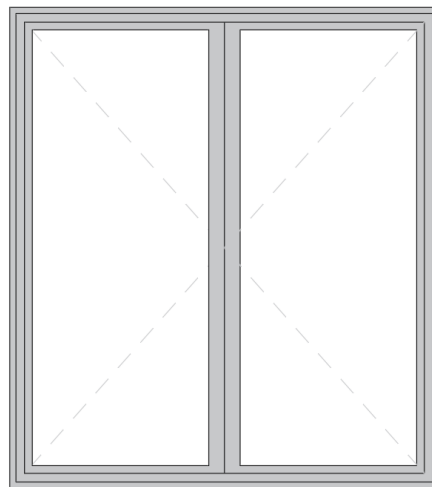
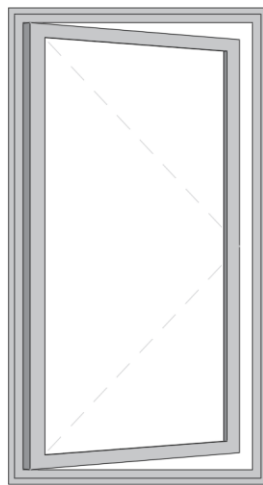
Longitud máxima	1500mm
Altura máxima	2500mm
Espesor máximo de cristal	28mm
Permeabilidad al aire	Clase 3
Permeabilidad al agua	Clase 4A
Resistencia al viento	Clase B3

Tipologías

- 1 Batiente
- 2 Batiente doble



1



2